

THE NEW LINEAR E3 ENTRY IS CAPABLE OF BIG THINGS



Order Number EN-2A4/EN-2M4

Sensor and Optional Camera:

Motion sensor, ambient light sensor and optional HD IP camera

Backlit Color Display:

Easy to read programmable display with adjustable font size.

RFID Inside:

Option to mount a reader internally for aesthetically pleasing end result.

Easy Navigation

Stainless steel keypad with recessed illuminated blue keys. Polycarbonate home key with white illuminated backlighting.

Audio and Sound:

Digital signal processing for noise reduction and voice clarity.

Locking Mechanisms:

Postal lock and 3-point locking mechanism for added security.

Front Housing Materials:

Engineered Linear ArmorTech polycarbonate with stainless steel faceplate.

Browser-based system with embedded Linux for fast and easy remote management. No need for a PC or a server.

Easy-to-use interface with simple tone gesturing and visual cues.

Incredibly durable Linear ArmorTech polycarbonate housing stands against all elements. Light weight and RFI friendly.

Leverages existing technology investments. Compatible with 2 wire telephony options, POTS and VOIP for easy and fast installations.

APPLICATIONS

Gated communities, parking garages, office buildings, apartments, dormitories, hotels/motels, commercial buildings and recreational facilities.

LINEAR E3 ENTRY 4.3" MULTI-DOOR TELEPHONE ENTRY AND ACCESS CONTROL

Two door controller, expandable up to 36 doors

72 input/output readers

Includes MegaCode Receiver

ArmorTech polycarbonate and steel housing options



1

SELECT THE MODEL

e3 Entry 4.3" Tactile Non-touch screen.
Polycarbonate or metal housing options.
Other models available soon

2

SELECT THE EXPANSION MODEL (IF MORE DOORS NEEDED)

Customer could also select additional
add on controllers same as above as

3

SELECT THE EN-ACM. AVAILABLE SOON (IF YOU NEED MORE OUTPUTS/INPUTS)

EN-ACM 2 door expansion module can
be added to the EN-EXN to add two
additional outputs and inputs

4

ADD A READER OR KEYPAD (ORDER SEPARATELY)

Linear 2-N-1 HAF/HAS
Linear 2000-Series Keypad
Linear BluePass Reader (Bluetooth)

5

ADD CREDENTIALS (ORDER SEPARATELY)

Wiegand/Proximity KeyFobs
Linear Proximity Cards
Mobile Credentials

**COMING
SOON**

ADD RMC: REMOTE MANAGEMENT CONSOLE FOR EASY PROGRAMMING - ALL YOU NEED IS A BROWSER

RMC is an web-based secure tunneling technology that enables remote management of one or many systems from outside the clients firewall.

- You and your customers can securely access, monitor, set-up and manage all the connected devices in your Linear access control systems – anywhere and anytime – without rolling a truck.
- Data and decision making happens at the local level, hence the RMC is independent from online connection.
- Upgrade your system to include RMC today! Contact your regional sales person or learn more www.nortekcontrol.com

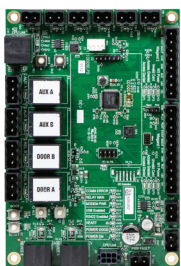


SYSTEM EXPANSION MODULES



EN-EXN - STAND-ALONE ACCESS NODE, NO SCREEN OR KEYPAD

Add EN-EXN to your EN system to add two additional doors e.g. to poolhouse or community house within the same property. EN-EXN comes with metal housing, 6 knockouts, provisions for mounting and keyed lock. You can mount the EXN without moving PCB/plates 4 hole pattern offset from surface. Battery (back-up option): up to 12V 7Ah



EN-ACM - 2 DOOR ADD-ON EXPANSION MODULE

Add EN-ACM to EN-EXN to add two additional inputs and outputs. 1 RS485 port (compatible) only with EN-EXN, 4 Wiegand Readers, 1 Pbus, 6 selectable inputs, 4 form C relay outputs.

**COMING
SOON**

ACCESSORIES



LINEAR READERS AND KEYPADS

Linear's most popular proximity reader, the 2-N-1 125 kHz reader is designed to fulfill two different mounting requirements – without needing any additional hardware. Customers get a clean, low profile for both mullion and single-gang installations ready to install right out of the box for either configuration. Also our Wiegand readers and 2000-series keypads are compatible with the new Tele Entry NXG product line



CARD AND FOB CREDENTIALS

Linear 125 kHz Proximity Cards (or Fob) as well as 13.56 MHz Proximity Cards and Proximity Key Fobs, as well as magnetic cards are compatible with the new Linear e3 Entry line. Standard light proximity card provides maximum read range in a durable clamshell-style package, beveled edges, constructed of durable ABS plastic, vertical slot punch, off-white with Wiegand 26-bit format .



ACT TRANSMITTERS

The Models ACT-31C, ACT-31DHC, ACT-34C and ACT-34DHC are 1-Channel Block Coded Key Ring Transmitters. DHC models combine the transmitter and proximity tag and they work with certain HID 125 kHz formats. Also included are lithium batteries with a five-year service life. An unique 10-second time-out feature prevents the system from being shut down by a single transmitter transmitting continuously.

FOR MORE ACCESSORIES PLEASE SEE WWW.LINEAR-SOLUTIONS.COM

E3 ENTRY 4.3" SPECIFICATIONS

ITEM	e3 Entry 4.3" - Order Number <i>EN-2A4 (ArmorTech) EN-2M4 (Metal)</i>
Warranty	2 Years Hardware and Software
UL294 Series 6	UL294 Series 6, Attack class 2, ROHS, FCC
Available Modules	2-Door Module, 4 Door Modules
System Integrity	128 bit Encryption (User database and events) / SSL / HTTPS / PHP
Language	English
System Control	Web Browser compatible
Pre Configured Doors Per System	2 on board, expandable I/O (2/2) up to 36 doors
Max Readers per system	Expandable up to 72 in/out
Max Modules - Sites per system	32
Distributed Processing	Every module contains database and events
Outputs Per Board	4 Form C SPDT / Dry 5 Amp
Outputs Times	Hours, Min, Sec., by set time and or repeat quantity.
e-Mail and SMS Notification	Yes
Inputs per board	8- 6 Analog Selectable for type, 2 Pre-assigned (Tamper, Postal)
Input types	NO / NC Parallel Resistor, NO / NC Series Resistor, NO / NC Unsupervised
Predefined Door Configuration	Lock, Prop (Output) REX, Door Position (Input)
Expansion Modules	8 Caviot with 36 doors max
Environmental Temperature	-22°F to 149°F (-30°C to 65°C) Humidity: 5% to 95% non-condensing
EVENT ACTION	
Event Action Input	Reader Event, Physical Input, Door Position, REX, System Event, API
Event Action Output	Outputs, Dashboard, eMail, SMS, Back up SD / FTP, Threat level, Video tag
Power (per board)	12VDC from provided DC plug in power supply - Power for two modules & readers
Battery Charging	2 / 7AH Batteries
Total System Access Levels	250
Users per system	10 000
User Photos	10 000
Access cards	120,000
Cards per person	32
Binary Card Decoder	Yes - 26 - 128 bit with or with out facility code, Facility Code Only
User-defined data fields	20 user fields, Flat File Import Option
Integrated Flat File Database Import Tool	Yes, CSV and TXT
Day Light Savings Time "DST"	Automatic , Editable dates if future requirement
SMTP	On / Off Manual, PC Sync
Client Time Zone Configuration	Yes, Each module is selectable
Time specifications (schedules)	250
Time spec groups (Schedule groups)	64
Holidays, Holiday Groups	60, 4 groups
Online event history log	50,000 transactions
Transaction Types	Action of any type, Administrator Change Logging "Audit", and System Diagnostic Events.
Archive for transactions	Manual, Automatic daily, Automatic by 90% full
Archive for system configuration files	Manual, Automatic daily
FTP Off Controller Report Utility (Seamless thru existing UI)	Yes, 500K+ transaction files
Administration / User Roles	Super for Entire System, Admin designated by doors (building), Customizable by Users
Maximum concurrent web users	25
Maximum defined administrative users	160
Remote Management Console	Optional
USER INTERFACE FEATURES	
System Fully Web Controllable	Yes
Action Icons	Door Unlock, Toggle, Aux outputs
Alarm Acknowledgement	Yes
Logo Placement	Yes - Ability to place Dealer or End user logo into system

Nortek Security & Control | 1950 Camino Vida Roble | Suite 150 | Carlsbad, CA 92008 | 800.421.1587 | linear-solutions.com

Copyright © 2017 Nortek Security & Control LLC. All rights reserved. Linear is a registered trademark of Nortek Security & Control LLC. All other products or name brands are trademarks of their respective holders. Specifications and product availability subject to change without notice. Connect with us today—NortekControl.com or 1.800.421.1587.

 **NORTEK**
SECURITY & CONTROL